



# ANNUAL REPORT 2023 -2024





# Mission Statement

**Bridging the gap for Arizona communities  
with nourishment for today  
and hope for tomorrow.**



## Where we get food:



### RETAIL/GROCERY RESCUE

**35M** lbs

**TOP PARTNERS:** Safeway/Albertson's  
Amazon  
Bashas  
Costco  
Fry's  
HelloFresh  
Sam's Club  
Sprouts  
Target  
Trader Joe's  
Walmart



### FOOD MANUFACTURERS & OTHER

**22M** lbs



### PRODUCE FARMERS

**24M** lbs



**30M** lbs



### PURCHASED FOOD

**16M** lbs



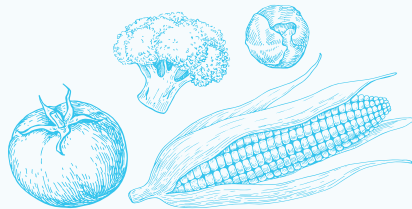
### FOOD DRIVES

**473** Hosted & Collected

## How we give food:

### DISTRIBUTION

**2.2M** Visits from our Neighbors in Need  
**105M** Meals Overall  
**47M** Pounds of Produce  
**700+** Agency Partners



### TRIBAL PARTNERSHIPS

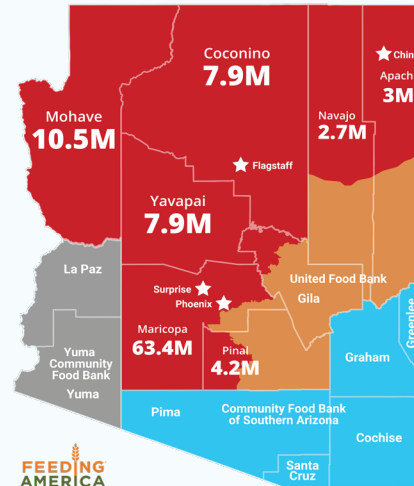


### SKILLS CENTER PROGRAMS



**212** Students Graduated from our Community Kitchen and LIFT warehouse training programs for adults.

### NUMBER OF MEALS BY COUNTY



FEEDING AMERICA

### OUR FLEET

**1.7M** Miles Driven  
**108** Trucks and Vehicles



### VOLUNTEERS

**191K** Volunteer Hours  
**81K** Volunteer Visits

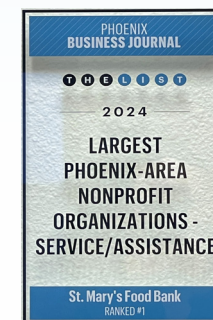


### CHILD NUTRITION PROGRAMS

**867K** Kids Cafe® after-school and summer meals served  
**117K** Family weekend backpacks of food given to kids  
**343** Kids Cafe® after-school and summer meals sites



### AWARDS





# Connect



## Our Locations

### PHOENIX

#### **St. Mary's Food Bank – Neighborhood Food Center**

3131 W. Thomas Road • Phoenix, AZ 85017

#### **St. Mary's Food Bank – Skills Center**

3003 W. Thomas Road • Phoenix, AZ 85017

#### **St. Mary's Food Bank – Administration and Warehouse**

2831 N. 31st Avenue • Phoenix, AZ 85009

### SURPRISE

#### **St. Mary's Food Bank – Neighborhood Food Center**

13050 W. Elm Street • Surprise, AZ 85378

### FLAGSTAFF

#### **St. Mary's Food Bank – Administration Office Only**

5200 E. Cortland Blvd Suite A15 • Flagstaff, AZ 86004

### CHINLE

#### **St. Mary's Food Bank – Neighborhood Food Center**

North IR7 • Chinle, AZ 86503

[www.StMarysFoodBank.org](http://www.StMarysFoodBank.org)

602-242-FOOD (3663)

Follow us on social

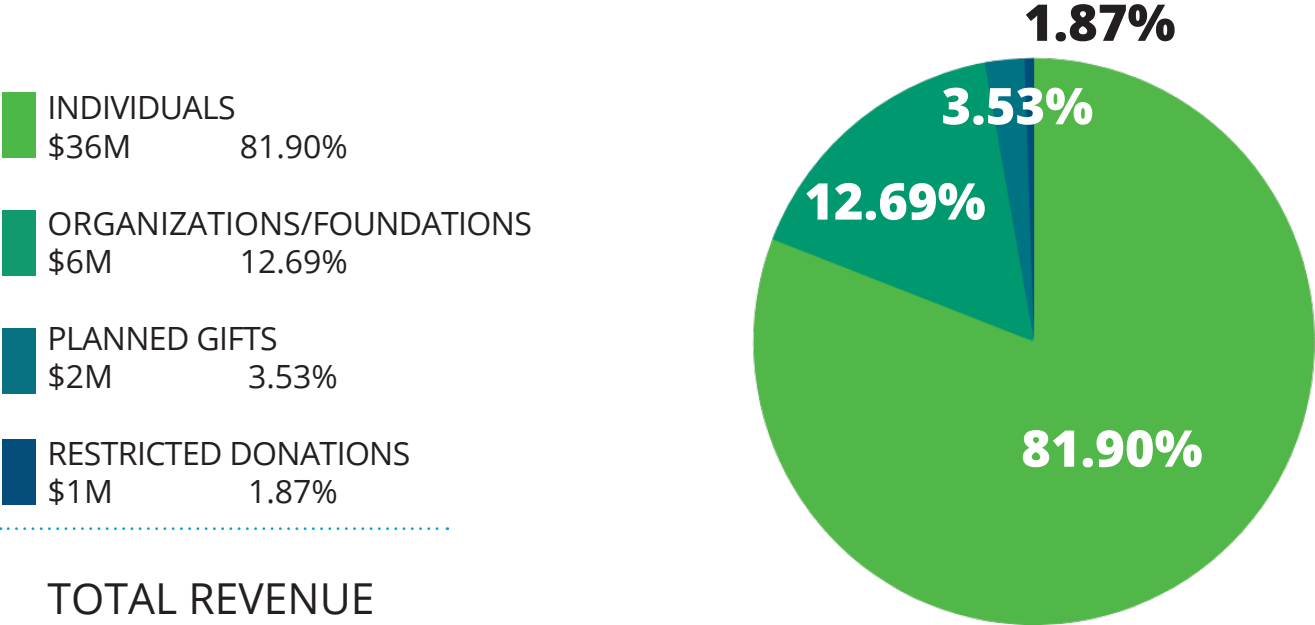
@StMarysFoodBank





# Contributed Income

# 2023-2024



TOTAL REVENUE  
\$45M



# Thank You Donors!



The staff and leadership of St. Mary's are so grateful for your kind heart and generous nature. Your financial support is key to our mission to help our neighbors struggling with hunger.

This past year, so many Arizonans needed our help. The number of families and seniors coming to us for help increased dramatically over the previous year. A large portion of those neighbors needed our help for the first time in their lives...some used to be financial supporters.

You have made an enormous difference in their lives. Knowing that you care is a great relief to the mother worrying about feeding her children, the father whose wages don't cover increased food prices, the senior citizen living on a fixed income as prices soar.

Thank you for helping us to help them. We hope you understand the significant impact your support of St. Mary's has had on our fellow Arizonans and our community. Thank You.





# Feeding kids with Child Nutrition Programs

## KIDS CAFE

Provides meals to school-age children participating in after-school or summer programs.

### DURING THE SCHOOL YEAR

**3,000** MEALS PER DAY      **120+** LOCATIONS

### DURING THE SUMMER

**10,000** MEALS PER DAY

**7,000** GREATER PHOENIX      +      **3,000** RURAL & TRIBAL AREAS



## SCHOOL PANTRY

With the cooperation of five schools, St. Mary's has established grocery-store-style pantries where parents and children can 'shop'. This shopping model provides a selection of various food items that students and parents can choose to take home to create meals for their families. This past year, 11,456 students took advantage of this wonderful opportunity.



## FAMILY WEEKEND BACKPACK

Backpacks full of enough non-perishable food to feed a family for two days are available to students through schools and after-school programs in areas of extreme poverty.

St. Mary's volunteers packed more than 117,000 backpacks this past year. Each backpack included a dozen nutritious and easily prepared food items such as peanut butter, canned meat, canned fruits and vegetables. These backpacks helped the students and their families create meals when school meals are not available.



# Everyone Deserves a Chance at Work



Our Skills Center consists of two programs created to provide training and, ultimately, employment to adults facing barriers to a better life. In addition to teaching employable skills, the curriculum includes life skills such as budgeting and anger management, to rebuild the students' confidence and self-esteem. Our programs offer job placement support and resources for success. This year, 212 proud students graduated from these programs.



## COMMUNITY KITCHEN

A nine-week culinary training program covering all aspects of the restaurant industry is available for adults with barriers to employment. From cooking and baking to creating menus and serving, students are able to learn hands-on the skills necessary for long-term employment in the food service.



## LOGISTICS. INVENTORY. FORKLIFT. TRAINING.

This is a six-week course providing specialized training in warehouse, inventory, and logistics operations. Students are taught how to operate forklifts and pallet jacks to help ensure placement in this stable and increasing industry.





# Food Box Programs



## THE EMERGENCY FOOD ASSISTANCE PROGRAM (TEFAP) FOOD BOXES

Our commitment to providing valuable and sustainable nutrition to our community is seen in the emergency food box we have created utilizing the government program, The Emergency Food Assistance Program. Any neighbor who comes to a St. Mary's Food Bank distribution receives a box of shelf-stable, high-quality food that lays a foundation of nutrition for our neighbors. Proteins, vegetables, and other pantry staples are at the core of this box and are our first step in filling the shelves of our neighbors' kitchens. All of our non-perishable boxes are supplemented with donated/purchased food such as fresh fruits and vegetables, dairy, meat, snacks and beverages.

## SENIOR BOX: COMMODITY SUPPLEMENTAL FOOD PROGRAM (CSFP) FOOD BOXES

We are always working to provide the best possible food for our neighbors, especially our neighbors with dietary limitations and restrictions. Our Senior Boxes help to meet the needs of an aging population by providing items catered to this demographic. This food box takes our offerings one step further to ensure that nutrition and usability are prioritized in meeting the dietary needs of our neighbors.



## TRIBAL FOOD BOXES

Providing culturally relevant and nutritionally dense food not only lifts up our neighbors, but grows and sustains our local food systems. We buy locally sourced food from distributors to increase neighbor access to traditional foods and support local tribal economies. Our indigenous neighbors are working hard to bring back to their communities food access and resources that were historically abundant. It is our honor to support them in their work to restore cultural traditions and local food systems with the distribution of our Tribal Food Box to more than 3,000 indigenous households every month.

# Home Delivery & Mobile Distribution

## HOME DELIVERY

At St. Mary's, we understand the challenges faced by individuals dealing with food insecurity, especially those who are unable to visit our centers or partner agencies. The Home Delivery Program supports neighbors who face difficulty accessing food due to disabilities, illness, transportation challenges, and other factors. The program utilizes both internal staff drivers and partnered third-party delivery services to ensure that food boxes reach those in need. Thanks to our generous donors, we continue to expand our delivery territory, reaching even more people in need. This fiscal year, we delivered food to more than 70,000 neighbors who were unable to travel to the food bank in Maricopa, Pinal, Yavapai, and Coconino counties. More than 1.9 million pounds of food were delivered through the program, making a meaningful impact in combating hunger. Thank you for supporting us as we continue to support our community.



## MOBILE DISTRIBUTION

Food insecurity is more prevalent in rural and remote communities. The Mobile Distribution Team serves as a vital link to reaching these areas, where traditional hunger relief programs are unavailable. Our goal is to expand food access across Arizona by partnering with communities that don't have hunger relief programs. The Mobile Distribution Team travels throughout Arizona to these communities to provide regular food distributions for those in need. During these monthly or bi-monthly mobile markets, we foster strong relationships with local leaders and volunteers to gather support for these distributions. Ultimately, our goal is to empower these communities to take ownership of the distribution efforts and become partners of St. Mary's Food Bank. While we work toward that goal, we provide hands-on training to build sustainability until these community leaders feel ready to operate independently.



# Agency Partners & Agency Types

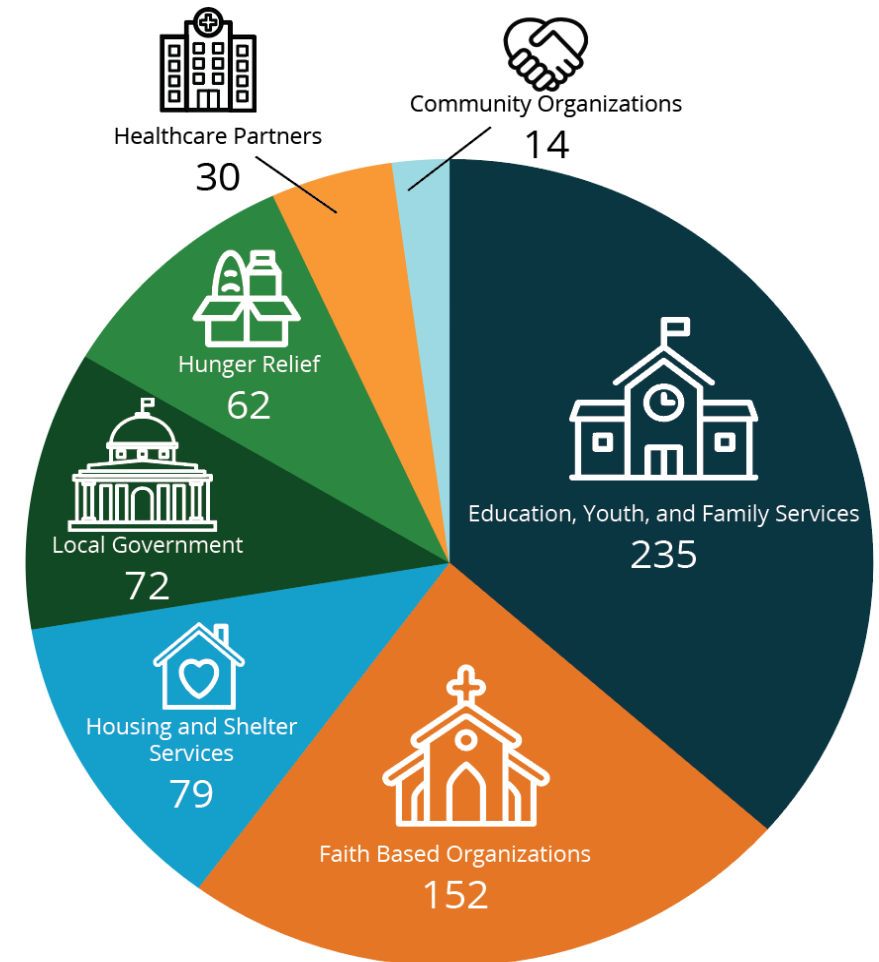
St. Mary's Food Bank proudly collaborates with an extensive network of 700+ partners across Arizona, including food pantries, mobile markets, and meal sites, all united in the mission to "Bridge the Gap" for those in need. Through these robust partnerships, we support hunger relief efforts by providing essential items such as fresh produce, proteins, dairy, bread, pasta, and more.

In FY2024, the combined efforts of our partner network and St. Mary's direct services distributed an impressive 104 million meals, including 47 million pounds of fresh produce, to help nourish our neighbors.



## THE RIPPLE EFFECT OF YOUR SUPPORT OF ST. MARY'S FOOD BANK

St. Mary's Food Bank supports 700+ partner organizations, across 76,000 square miles, in ten Arizona counties.



# Grateful Neighbors!



**Cindy**

**"It is amazing to have places like this, not just for seniors like me, but for anyone who needs a helping hand."**

**Didi**

**"Summer is coming and the boys will be home with me and no longer getting meals at school. Thanks to St. Mary's, my kids don't have to feel the effects of my unemployment."**



**Irene**

**"Coming to St. Mary's is so refreshing. The people here are kind. They make you feel worth it. And I am worthy. I just need a little help."**



# Volunteers

It might surprise you to learn that at St. Mary's Food Bank, we need 300+ volunteers EVERY DAY to help us. With a big mission comes a lot of hard work. Volunteers help sort, box, and distribute food, load carts, assist neighbors and some serve on the Board of Directors.

St. Mary's thanks the companies, organizations, and individuals for their interest and passion for helping others. Over the course of the year, volunteers spent more than 191,000 volunteer hours to ensure that the one in five Arizonans who struggle to make ends meet have access to the food they so desperately needed.



## TOP 5 CORPORATE VOLUNTEER GROUPS



### Rocket Companies

- 530 Volunteers
- 1060 Volunteer Hours



### APS

- 501 Volunteers
- 1002 Volunteer Hours



### Bank of America

- 496 Volunteers
- 992 Volunteer Hours



### Amazon

- 466 Volunteers
- 932 Volunteer Hours



### American Express

- 456 Volunteers
- 912 Volunteer Hours

# Board of Directors

## 2023-2024 EXECUTIVE OFFICERS

### *Chair*

DOUGLAS CURRAULT  
Freepport-McMoRan Inc.

### *Past Chair*

GRAEME PARKES  
WillScot

### *Secretary*

DOUGLAS CURRAULT  
Freepport-McMoRan Inc.

### *Treasurer*

JOE CLANCY, CFA  
SunChase Holdings, Inc.

### *Vice Chair*

JOANNA ZUCKER  
CP Skin Health (Retired)

## EMERITUS BOARD

BOB BEAKE  
Shamrock (Retired)

JOHN DEMETRA  
Deloitte (Retired)

MARC ISAACS  
Sun Orchard (Retired)

TROY MCNEMAR  
McNemar Law

ERIK OLSSON  
WillScot (Retired)

## MEMBERS

JACALYN ASKIN  
Askin Consulting

WILL FELIZ  
Duncan Family Farms

RONA GUYMON  
Nationwide Financial

LISA PHELPS  
American Homes 4 Rent

JOHN ROUSSEL  
Shamrock Foods Company, Inc. (Retired)

CHERYL RUGGIERO  
Thunderbirds Charities

AMIEL SAWDAYE  
Arizona Diamondbacks

SCOTT SIBIGTROTH  
Medline Industries (Retired)

MONICA VILLALOBOS  
AZ Hispanic Chamber of Commerce

LAURA WORZELLA  
OneAZ Credit Union

MILT LIU  
St. Mary's Food Bank

## ST. MARY'S FOOD BANK SENIOR STAFF

MILT LIU  
Chief Executive Officer

ROMAN ARRIOLA  
Chief Operating Officer

MARCOS GAUCIN  
Chief Programs Officer

LISA HICKIE  
Chief People Officer

LISA NOTARO, CFRE  
Chief Development Officer

## ST. MARY'S FOOD BANK FOUNDATION BOARD

CAROLYN "CJ" JENKINS BOWER  
Rite of Passage, Inc.

JOE CLANCY, CFA  
SunChase Holdings, Inc.

STEPHEN BARNES, CFA®, CFP®  
Barnes Investment Advisory Inc.

MATT HARRISON  
Golden West, A Financial Corp.

TROY MCNEMAR  
McNemar Law

